



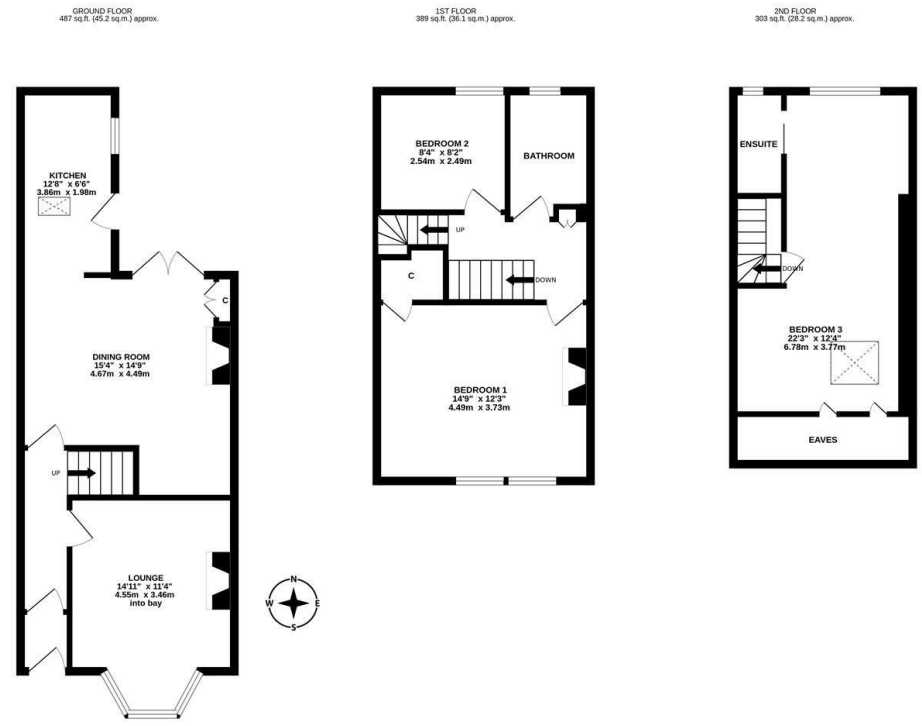
****AVAILABLE AUGUST 2026** **FURNISHED****
****THREE STOREY PERIOD TERRACE HOUSE****
 A charming Victorian Terraced house, ideally located at the East end of Simonside Terrace, Heaton. Close to Chillingham Road, this wonderful property is conveniently situated just a short stroll to the shops, cafes and restaurants as well as excellent transport links into the City and beyond.

Boasting period features as well as modern fixtures & fittings, the accommodation briefly comprises; entrance porch through to hallway; lounge to the front with bay window, feature fireplace and wood flooring; spacious dining room with French doors leading to rear yard, alcove storage and feature fireplace, open plan to a modern fitted kitchen with appliances and a sky-light providing ample natural light; stairs to first floor landing lead to master full width double bedroom to the front, with period fireplace and fitted storage; bedroom two to the rear; family bathroom WC, tiled with three piece suite; 2nd floor loft conversion hosts a third double bedroom, benefiting from eaves storage, a plush recently fitted shower room en suite and great views over Iris Brickfield allotments. Externally there is a private yard to the rear and on street parking to the front.

Available on a furnished basis, with gas central heating and double glazed windows, this is a super property ideal for a professional couple or two professional sharers.

****Please Note: some of the furniture depicted has since changed, please ask staff for further info****

Available 8th August 2026 | £1,450pcm | Furnished |
 Victoria Terraced House | 1,179 sq ft (109.5 m2) | Three Floors | Three Double Bedrooms | Dining Room | Lounge | Open Plan Kitchen | Bathroom WC | 2nd Floor En Suite Shower Room | Private Rear Yard | Allotment Views | GCH & DG | On Street Parking | Council Tax Band: B | EPC Rating: D



TOTAL FLOOR AREA: 1179 sq.ft. (109.5 sq.m.) approx.
 Whilst every attempt has been made to ensure the accuracy of the floorplan contained here, measurements of doors, windows, rooms and any other items are approximate and no responsibility is taken for any error, omission or mis-statement. This plan is for illustrative purposes only and should be used as such by any prospective purchaser. The services, systems and appliances shown have not been tested and no guarantee as to their operability or efficiency can be given.
 Made with Metropix ©2025

£1,450 PCM

IMPORTANT NOTE: These particulars and the descriptions and measurements herein do not constitute representation and whilst every effort has been made to ensure accuracy, this cannot be guaranteed.

